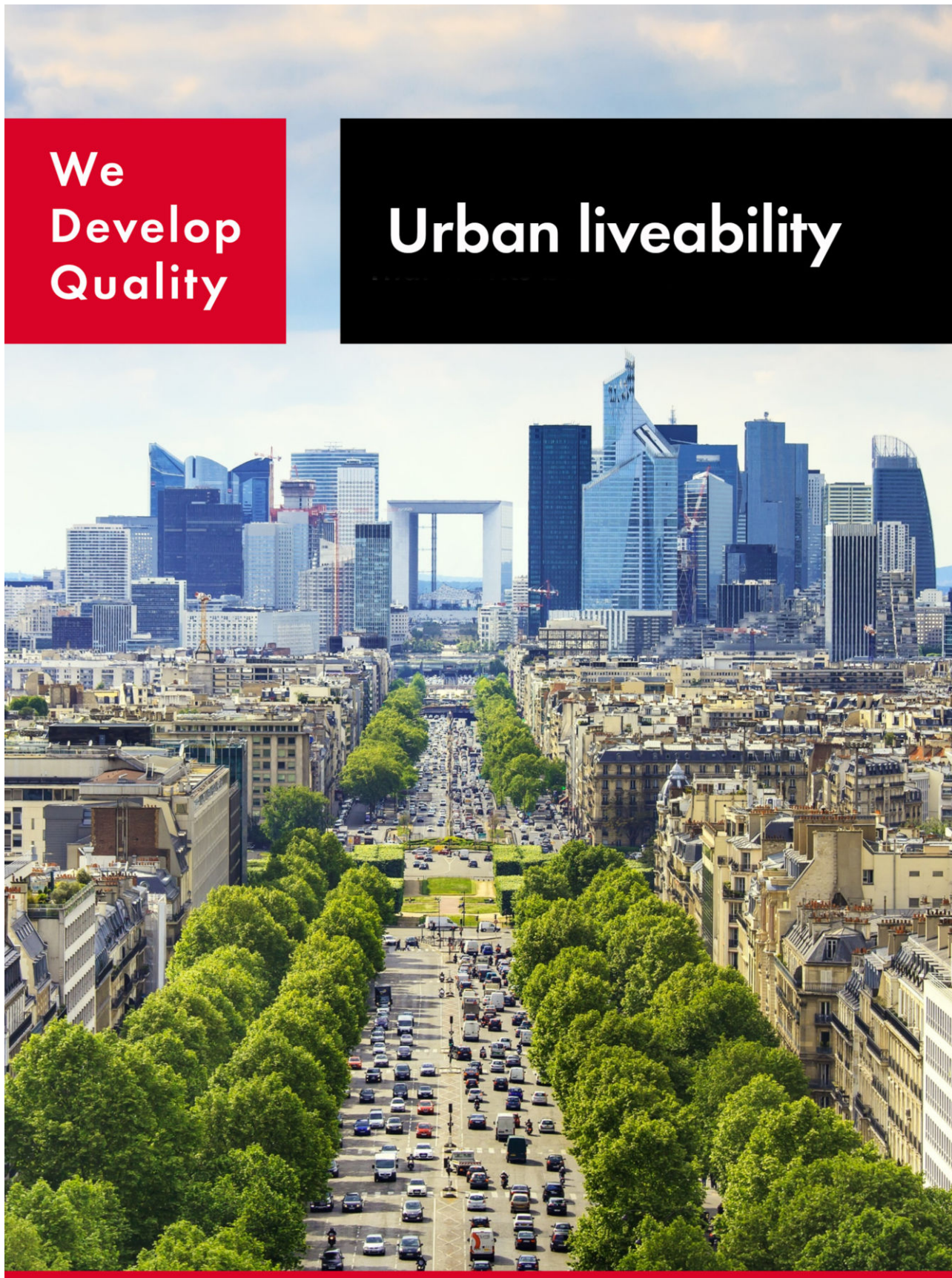


ANNUAL CSR REPORT 2021

We
Develop
Quality

Urban liveability



REVIEW OF ACTIVITIES

Central location in The Hague

The Malieveld in The Hague is a large park located at just a few minutes walk from the Central Station. The park is widely known in the Netherlands as the location of many large-scale demonstrations as it is also near the Dutch parliament. Malieveld is also used for festivals, funfairs, concerts and other big events.

Figure 5: Malieveld



Although this underground car park is in the city centre, it is easy to reach from the motorway. The car park offers 600 parking spaces as well as bicycle parking. Like many other of Q-Park's city centre car parks, this is an ideal location to park and switch transport mode to reach a destination in The Hague.

Q-Park Malieveld is at a tram stop and close to the train station where bicycle sharing schemes are available. Special offers make pre-booked parking for an evening out or weekend in the city attractive.

It also serves as a mobility hub for Scheveningen beach as the nearest tram stop is only a one-minute walk. Decreasing traffic to the sea and increasing liveability and leisure opportunities for residents and visitors alike.

Figure 6: Park + Beach



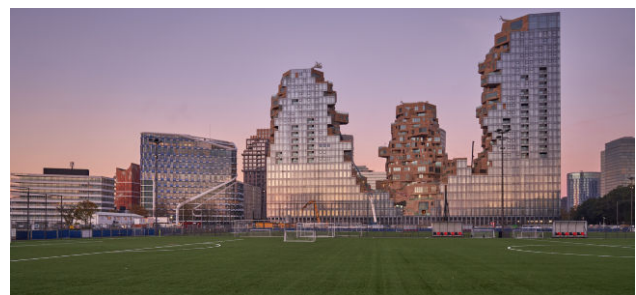
Green Valley in Amsterdam

With 375 parking spaces divided over three underground parking levels, Q-Park Valley considerably expands our parking offering in Amsterdam. More importantly, this car park is part of the iconic Valley residential building in Amsterdam's rapidly expanding business district, the Zuidas.

Valley is an eye-catching mixed-use structure. It is designed to provide an attractive green building where people can live, work and visit. The first seven floors accommodate offices, cultural facilities, retail and restaurants, and give access to the residential towers. The residential area starts at the eighth floor.

Q-Park Valley offers some 400 parking spaces, 56 of which are reserved for residents. In addition, there are nine spaces for people with reduced mobility (PRMs). There are plenty of EV charging points, with 14 available to the general public and 4 extra for residents.

Figure 7: Iconic Valley at Zuidas, Amsterdam



The main feature of the design is the overwhelming abundance of greenery which, combined with the publicly accessible courtyard garden, amplifies this effect.